



# Ultra Station Software

## DG5000, DG4000 and DG1000Z series

- Supports RIGOL DG5000, DG4000 and DG1000Z series
- Editing and creating waveforms to upload them to the Function/Arbitrary Waveform Generator
- Supports \*.csv, \*.txt, \*.raf, \*.wav files
- Insert 10 standard waveforms
- Create any waveform by using the Formula Editor \*
- Draw the waveform
- Perform filtering function on selected waveform \*
- Windowing function on the selected waveform \*
- Execute simple math operations on the selected waveform
- Display power spectrum of current waveform
- Show Phase spectrum of current waveform

RIGOL Ultra Station software is a tool for editing and creating desired waveforms and upload them to a RIGOL DG5000 series, DG4000 series or DG1000Z series Function/Arbitrary Waveform Generator. A waveform can be created by insert one of the 10 standard waveforms, entering the formula of the waveform to the Formula Editor\* or by drawing it with the different drawing functions of Ultra Station. It can be selected on which channel of the DG the upload should be send and whether the device should directly perform an output on this channel.



## Main Features

There are three different ways to create or edit a waveform in Ultra Station. First one of the standard waveforms can be selected. The standard waveforms are:

- Sine
- Square
- Ramp
- White Noise
- Sinc
- DC
- ExpRise
- ExpFall
- Sweep
- Multi Tones

Another way to create a waveform is to draw it. There are three different functions to draw a waveform:

- Freehand Draw
- Point Draw
- Line Draw

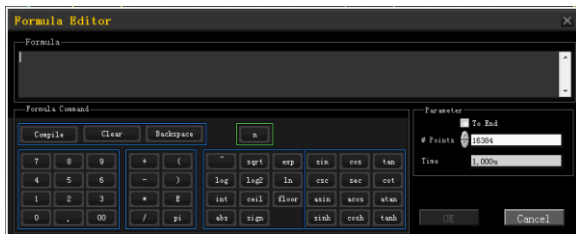
## Features of the Advanced Version (liable to pay costs)

Ultra Station allows performing filtering function on the selected waveform. The filtering functions are (only available in Advanced Math Editing Version):

- Lowpass Filter
- Bandpass Filter
- Bandstop Filter
- Highpass Filter
- Smoothing Filter

With Ultra Station a windowing function can be performed on the selected Waveform (only available in Advanced Math Editing Version):

- Cosine Extension
- Cosine Rise
- Hamming Window



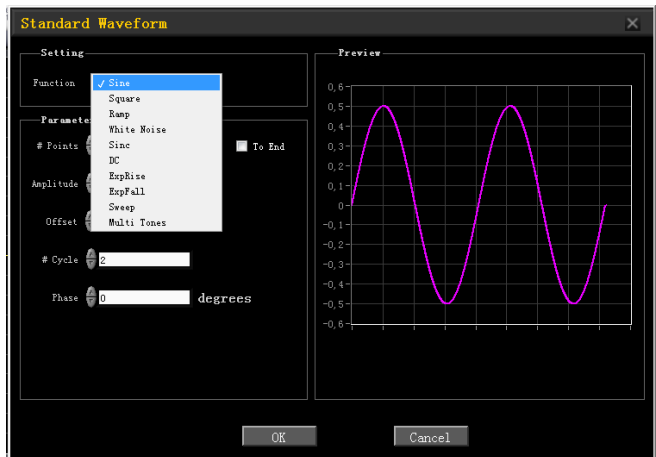
## Product Overview

Ultra Station is a software tool, which supports RIGOL DG5000, RIGOL 4000 and RIGOL DG1000Z series.

This software tool is compatible with Windows XP, Windows Vista and Windows 7 operating systems.

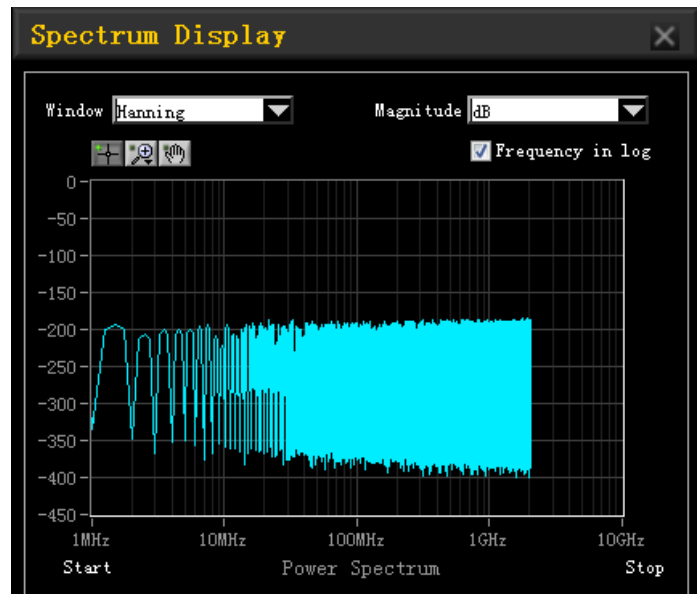
There are 2 Versions available of Ultra Station: General Application Version and Advanced Math Editing Version, last one has to be bought.

Ultra Station supports \*.csv, \*.txt and \*.raf files. As audio files \*.wav are supported (8-Bit, 16-Bit, 24-Bit, 32-Bit single or dual channel).



The desired waveform can also be insert by using the Formula Editor.

Any waveform that can be expressed by a formula can be displayed.



\* Function is just available in Ultra Station Advanced Math Editing Version

# RIGOL

### Headquarter

RIGOL TECHNOLOGIES, INC.  
No.156,Cai He Village,  
Sha He Town,  
Chang Ping District, Beijing,  
102206 P.R.China  
Tel:+86-10-80706688  
Fax:+86-10-80705070  
Email: info@rigol.com

[www.rigol.com](http://www.rigol.com)

### USA

RIGOL TECHNOLOGIES  
USA,INC.  
7401 First Place,Suite N  
Oakwood Village  
OH 44146,USA  
Tel/Fax: 440-232-4488  
Toll free: 877-4-RIGOL-1  
Email: info@rigol.com

### Europe

RIGOL TECHNOLOGIES EU,  
GmbH  
Lindberghstr. 4  
82178 Puchheim, Germany  
Tel: +49(0)89-8941895-0  
Email: info-europe@rigol.com